

ENSTO



OPCP404018T

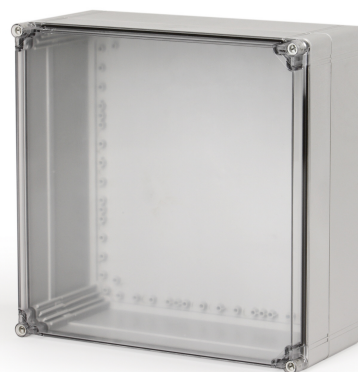
Enclosure PC

Available from the UK's premier enclosure distributor, iLECSYS Ltd,
01844 397300
sales@ilecsys.co.uk

Code	OPCP404018T
GTIN	6438100112806
Name	Enclosure PC Ensto Cubo O Size 400 x 400 x 187 mm, plain sides, transparent cover, PC
Description	Ensto Cubo O is a series of medium to large size enclosures available with plain sides or metric knockouts. Special features of the series allow mounting the cover onto the back of the base and include adjustable elevators for the base corner slots, enabling plates and panels to be mounted at any height.
Vendor	Ensto Finland Oy

Services available from iLECSYS

- ✓ CNC Machining
- ✓ CNC Thread Milling
- ✓ Screen Printing
- ✓ Full Assembly



Technical specification

Others

Content:	Enclosure base, cover, extension frame, cover screws, mounting screws, screws for the extension frame
----------	---

Ratings

Degree of protection:	IP66/IP67
Flammability rating:	UL 746C 5 inch flame test

Dimensions

Depth:	187 mm
Height:	400 mm
Inner depth:	170 mm
Net Weight:	3.34 kg
Outer base depth:	157 mm
Outer cover height:	30 mm
Size:	400 x 400 x 187
Volume :	29.92 cm ³
Weight:	3.34 kg

Width: 400 mm

Mechanical

Impact strength: IK 08

Certificates

Standards: EN 62208,GOST R

ETIM

Etim

Colour: Grey

Degree of protection (IP): IP67

Depth: 187 mm

Height: 400 mm

Impact strength: IK08

Material: Plastic

Mounting plate depth-adjustable: True

RAL-number: 7035

Suitable for outdoor set-up: True

Surface finishing: Untreated

Wall fastening possible: True

With glazed door: True

Packaging

Default package

Unit: PCE

Package size: 1

Depth: 431 mm

Width: 431 mm

Height: 208 mm

Weight: 3.74 kg

Volume: 38.64 l