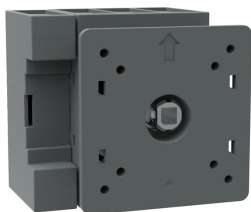


PRODUCT-DETAILS

# OT63FT4N2

## OT63FT4N2 SWITCH-DISCONNECTOR



### General Information

Extended Product Type	OT63FT4N2
Product ID	1SCA105393R1001
EAN	6417019393285
Catalog Description	OT63FT4N2 SWITCH-DISCONNECTOR
Long Description	4-pole, front operated, door mounted switch-diconnector / non-fusible diconnect switch with protected clamp terminals, handle is not included

### Popular Downloads

Data Sheet, Technical Information	1SCC301020C0201
Instructions and Manuals	1SCC301063M0006
Mechanical Drawings	1SCC301456F0001 1SCC301455F0001 OT63-80FT4N2

### Dimensions

Product Net Width	65 mm
Product Net Height	72 mm
Product Net Depth / Length	69 mm
Product Net Weight	0.32 kg

## Technical

Rated Operational Current AC-21A ( $I_e$ )	(380 ... 415 V) 63 A (500 V) 63 A (690 V) 63 A
Rated Operational Current AC-22A ( $I_e$ )	(380 ... 415 V) 63 A (500 V) 63 A (690 V) 63 A
Rated Operational Current AC-23A ( $I_e$ )	(380 ... 415 V) 63 A (500 V) 45 A (690 V) 20 A
Rated Operational Power AC-23A ( $P_e$ )	(220 ... 240 V) 11 kW (400 ... 415 V) 22 kW (500 V) 22 kW (690 V) 15 kW
Conventional Free-air Thermal Current ( $I_{th}$ )	q = 40 °C 63 A
Conventional Thermal Current ( $I_{the}$ )	Fully Enclosed 63 A
Rated Impulse Withstand Voltage ( $U_{imp}$ )	8 kV
Rated Insulation Voltage ( $U_i$ )	acc. to IEC/EN 60664-1 750 V
Rated Operational Voltage	Main Circuit 750 V
Rated Short-Circuit Making Capacity ( $I_{cm}$ )	(690 V) 1.4 kA
Rated Short-time Withstand Current ( $I_{cw}$ )	for 1 s 1 kA
Power Loss	at Rated Operating Conditions per Pole 2.8 W
Pollution Degree	3
Handle Type	Handle and shaft not included
Fourth Pole Position	Right Side
Fourth Pole Type	Switched - Simultaneous Function
Switches Operating Mechanism	Mechanism on Top of the Switch
Distance Between Phases	Standard
Position of Line Terminals	Top In - Bottom Out Bottom In - Top Out
Operating Mode	Front operated
Standards	IEC 60947-3 / UL 508 / CSA C22.2 No. 14
Special Functions	No
Mounting Type	Door mounting
Number of Poles	4
Cable Cross-Section	Cu 1.5...35 mm <sup>2</sup>
Degree of Protection	Front IP20
Terminal Type	Screw Terminals
Tightening Torque	acc. IEC 60947-1 2 N·m
Mechanical Durability	20000

## Technical UL/CSA

Maximum Operating Voltage UL/CSA	600 V
Horsepower Rating UL/CSA	(110 ... 120 V AC) Single Phase 2 Hp (240 V AC) Single Phase 7.5 Hp (440 ... 480 V AC) Single Phase 15 Hp (550 ... 600 V AC) Single Phase 15 Hp (220 ... 240 V AC) Three Phase 15 Hp (440 ... 480 V AC) Three Phase 30 Hp (550 ... 600 V AC) Three Phase 30 Hp

Ampere Rating UL/CSA	60 A
Tightening Torque UL/CSA	18 in-lb

## Environmental

RoHS Status	Following EU Directive 2011/65/EU
Environmental Information	1SCC301183D0201

## Certificates and Declarations (Document Number)

Declaration of Conformity - CE	1SCC301167D2704
Environmental Information	1SCC301183D0201
Instructions and Manuals	1SCC301063M0006
RoHS Information	1SCC301183D0202

## Container Information

Package Level 1 Units	1 piece
Package Level 1 Width	80 mm
Package Level 1 Depth / Length	84 mm
Package Level 1 Height	88 mm
Package Level 1 Gross Weight	0.34 kg
Package Level 1 EAN	6417019393285

## Classifications

Object Classification Code	Q
ETIM 5	EC000216 - Switch disconnecter
ETIM 6	EC000216 - Switch disconnecter
ETIM 7	EC000216 - Switch disconnecter
UNSPSC	39122233
WEEE Category	5. Small Equipment (No External Dimension More Than 50 cm)
E-Number (Sweden)	3171085

## Categories

Low Voltage Products and Systems → Switches → Switch Disconnectors

