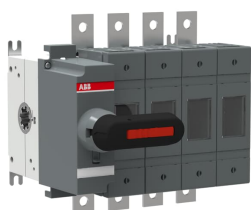


PRODUCT-DETAILS

OS160GB04N1P

OS160GB04N1P Switch fuse



General Information

| | |
|-----------------------|---|
| Extended Product Type | OS160GB04N1P |
| Product ID | 1SCA115896R1001 |
| EAN | 6417019481654 |
| Catalog Description | OS160GB04N1P Switch fuse |
| Long Description | Switch Fuses,Front Operated,4-pole,04 (Left Side),British Standard,A2-A4,Handle and shaft included,Switched - With Solid Link |

Popular Downloads

| | |
|-----------------------------------|-----------------|
| Data Sheet, Technical Information | 1SCC311137D0201 |
| Instructions and Manuals | 1SCC110037M0206 |

Dimensions

| | |
|----------------------------|--------------------|
| Product Net Width | 182 mm |
| Product Net Height | 140 mm |
| Product Net Depth / Length | 115 mm |
| Product Net Weight | 2.61 kg 5.75 lb |

Technical

| | |
|--|--|
| Rated Operational Current AC-21A (I_e) | (500 V) 160 A (690 V) 160 A |
| Rated Operational Current AC-22A (I_e) | (500 V) 160 A (690 V) 160 A |
| Rated Operational Current AC-23A (I_e) | (500 V) 160 A (690 V) 160 A |
| Rated Operational Power AC-23A (P_e) | (220 ... 240 V) 45 kW (400 V) 75 kW (415 V) 75 kW (500 V) 90 kW (690 V) 132 kW |
| Conventional Free-air Thermal Current (I_{th}) | q = 40 °C 160 A |
| Conventional Thermal Current (I_{the}) | Fully Enclosed 160 A |
| Rated Impulse Withstand Voltage (U_{imp}) | 8 kV |
| Rated Insulation Voltage (U_i) | 1000 V |
| Rated Operational Voltage | 500 V |
| Rated Short-time Withstand Current (I_{cw}) | for 1 s 5 kiloampere rms |
| Rated Conditional Short-Circuit Current (I_{nc}) | (690 V) 80 kA |
| Power Loss | at Rated Operating Conditions per Pole 12 W |
| Pollution Degree | 3 |
| Handle Type | Handle and shaft included |
| Fourth Pole Position | Left Side |
| Fourth Pole Type | Switched - With Solid Link |
| Switches Operating Mechanism | 04 (Left Side) |
| Position of Line Terminals | Top In - Bottom Out Bottom In - Top Out |
| Fuse Size | A2-A4 |
| Fuse System | British Standard |
| Operating Mode | Front Operated |
| Standards | IEC 60947-3 |
| Mounting Type | Base mounting |
| Number of Poles | 4 |
| Terminal Type | Lug terminals |
| Terminal Width | 20 mm |
| Tightening Torque | 15 ... 22 N·m |

Certificates and Declarations (Document Number)

| | |
|--------------------------------|---|
| CCC Certificate | CCC OS100-160G_2015.pdf |
| Declaration of Conformity - CE | 1SCC311137D2703 |
| DNV GL Certificate | 1SCC311125D0203 |
| EAC Certificate | EAC OT_OTDC_OTL_OTP_OTR_OTU_OTE_OETL_OESA_OESC_OTM_OS_OSM_.pdf |
| Instructions and Manuals | 1SCC110037M0206 |
| RoHS Information | 1SCC311108D0203 |

Container Information

| | |
|--------------------------------|-------------------|
| Package Level 1 Units | 1 piece |
| Package Level 1 Width | 260 mm 10.2 in |
| Package Level 1 Depth / Length | 290 mm 11.4 in |
| Package Level 1 Height | 190 mm 7.5 in |
| Package Level 1 Gross Weight | 2.9 kg 6.4 lb |
| Package Level 1 EAN | 6417019481654 |

Classifications

| | |
|----------------------------|--|
| Object Classification Code | Q |
| ETIM 4 | EC001040 - Fuse switch disconnecter |
| ETIM 5 | EC001040 - Fuse switch disconnecter |
| ETIM 6 | EC001040 - Fuse switch disconnecter |
| ETIM 7 | EC001040 - Fuse switch disconnecter |
| WEEE Category | 5. Small Equipment (No External Dimension More Than 50 cm) |

Categories

Low Voltage Products and Systems → Switches → Switch Fuses

