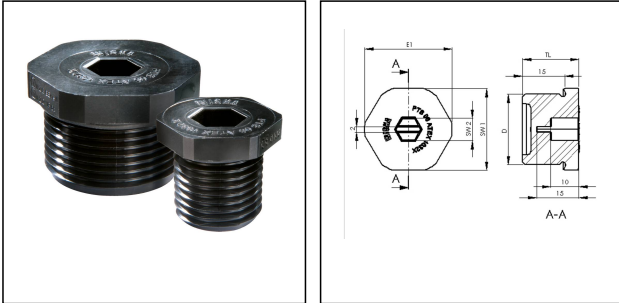


## EX-EVSG 50

EX stop end, polyamide, M50



Products may differ in size, colour and appearance to those shown. If you require further information or customisation, please contact us directly.



|                                 |                            |
|---------------------------------|----------------------------|
| <b>Material</b>                 | Polyamide                  |
| <b>Material sealing gasket</b>  | EPDM                       |
| <b>Temp. range min</b>          | -40 °C                     |
| <b>Temp. range max</b>          | 75 °C                      |
| <b>Protection class</b>         | IP66 / IP68 (5 bar 30 min) |
| <b>Type of protection</b>       | Ex eb, Ex tb               |
| <b>Ex-Certificate</b>           | ATEX, IECEx                |
| <b>Product Color</b>            | RAL 9005                   |
| <b>Thread type</b>              | M                          |
| <b>Ø Connection thread D</b>    | 50                         |
| <b>Lead</b>                     | 1,5                        |
| <b>Length screw-in thread L</b> | 15 mm                      |
| <b>Key width SW1</b>            | 55 mm                      |
| <b>Key width SW2</b>            | 8 mm                       |
| <b>Collar diameter E1</b>       | 60 mm                      |
| <b>Collar diameter E2</b>       | 9 mm                       |
| <b>Total length TL</b>          | 20 mm                      |
| <b>Order no. RAL 9005</b>       | 10065306                   |
| <b>Type</b>                     | EX-EVSG 50                 |
| <b>Packing unit</b>             | 30                         |
| <b>EAN number</b>               | 4007685653060              |
| <b>Tariff number</b>            | 39269097                   |
| <b>ETIM-Classification</b>      | EC000032                   |

Your Contact:

WISKA Hoppmann GmbH

Kisdorfer Weg 28 · 24568 Kaltenkirchen · Germany

☎ +49-4191-508-0 · 📠 +49-4191-508-209

contact@wiska.de · www.wiska.com

**Recommended accessories**

**EMUG 50 BK**



10061786

18.12.2024

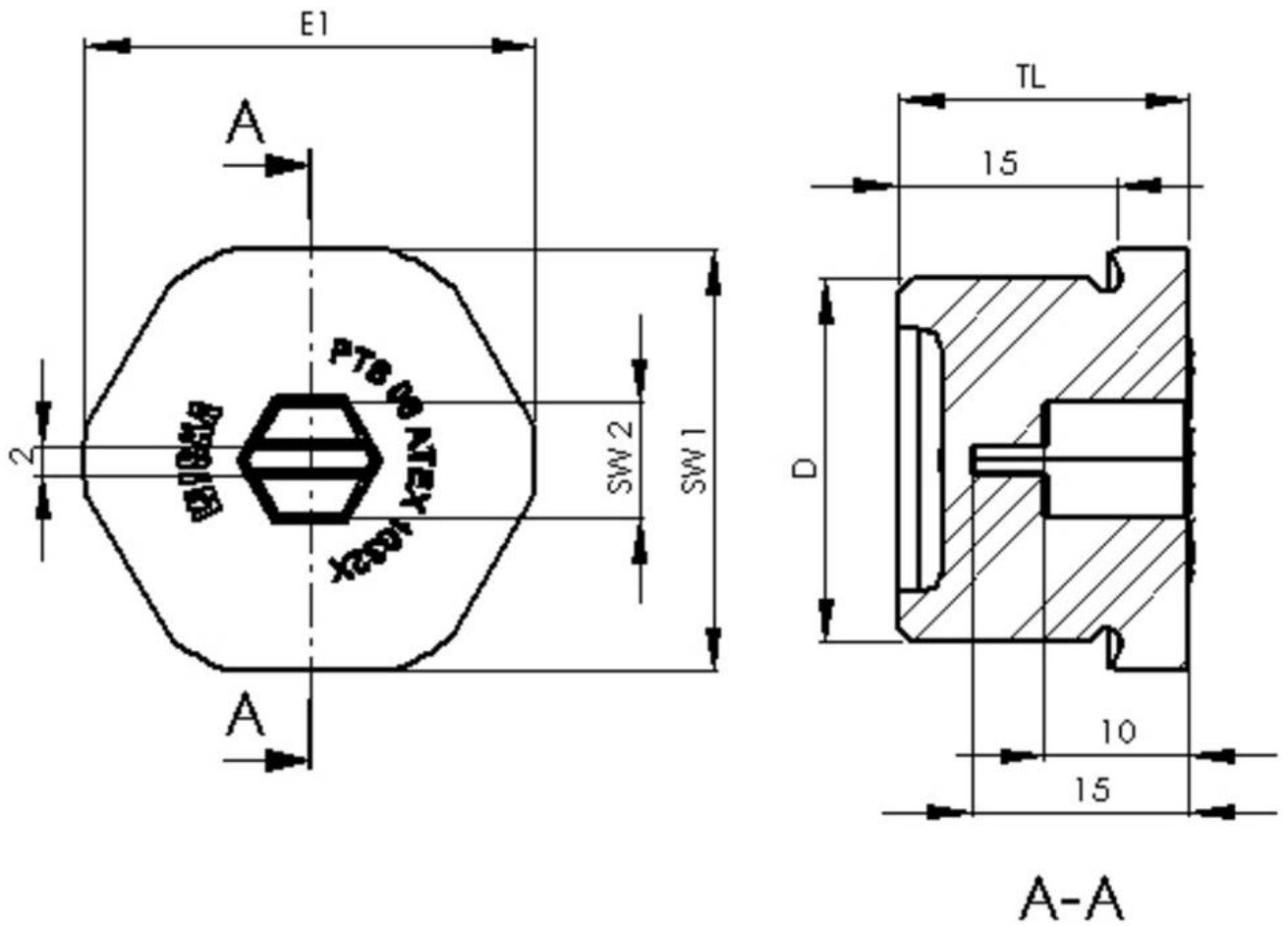
Your Contact:

**WISKA Hoppmann GmbH**

Kisdorfer Weg 28 · 24568 Kaltenkirchen · Germany

 +49-4191-508-0 ·  +49-4191-508-209

contact@wiska.de · www.wiska.com



Your Contact:

**WISKA Hoppmann GmbH**

Kisdorfer Weg 28 · 24568 Kaltenkirchen · Germany

☎ +49-4191-508-0 · 📠 +49-4191-508-209

contact@wiska.de · www.wiska.com