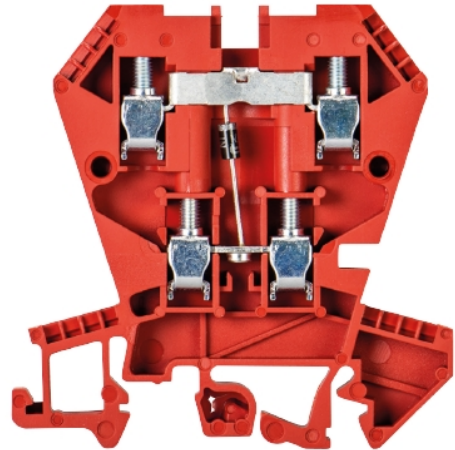


Data sheet

Art.No.: 57.404.8255.5

multi-tier terminal WK 4 E / U GO/V0

Multi-tier function terminal block with screw connection for mounting on TS 35 and TS 32, nominal cross section 4 mm², width 6 mm, color red



Art.No.	57.404.8255.5
EAN	4015573575523
Order Unit	100

certificates / approvals



Technical data

general

nominal cross section	4 mm ²
color	red
number of levels	2
number of clamp positions per level	2
width/grid dimension	6 mm
insulating housing	PA666
flammability class of insulation material acc. with UL94	V0
mounting method	DIN rail (top hat rail)/G-rail
terminal blocks for electrical installations	no
type of component	diode

technical data

rated current	1 A
rated voltage	400 V
pollution degree	3
closing plate required	yes
type of insulation material	thermoplastic
length	61.6 mm

connection data

connection type 1	screw connection
connection type 2	screw connection

minimum cross section solid	0.5 mm ²
maximum cross section solid	4 mm ²
minimum cross section fine stranded	0.5 mm ²
maximum cross section fine stranded	4 mm ²
wire strip length	9 mm
torque conductor mounting	0.5 Nm

technical data UL/CSA

cross section UL	22-10 AWG
voltage UL	300 V
current factory wiring	20 A
current field wiring	20 A
cross section CSA	20-12 AWG
voltage CSA	300 V
current CSA	10 A

classification

ECLASS 11	
ECLASS 8.1	27141127
ETIM 9.0	EC000903
ETIM 8.0	EC000903
ETIM 7.0	EC000903
ETIM 6.0	EC000903
ETIM 5.0	EC000903
ETIM 4.0	EC000903
ETIM 3.0	EC000903

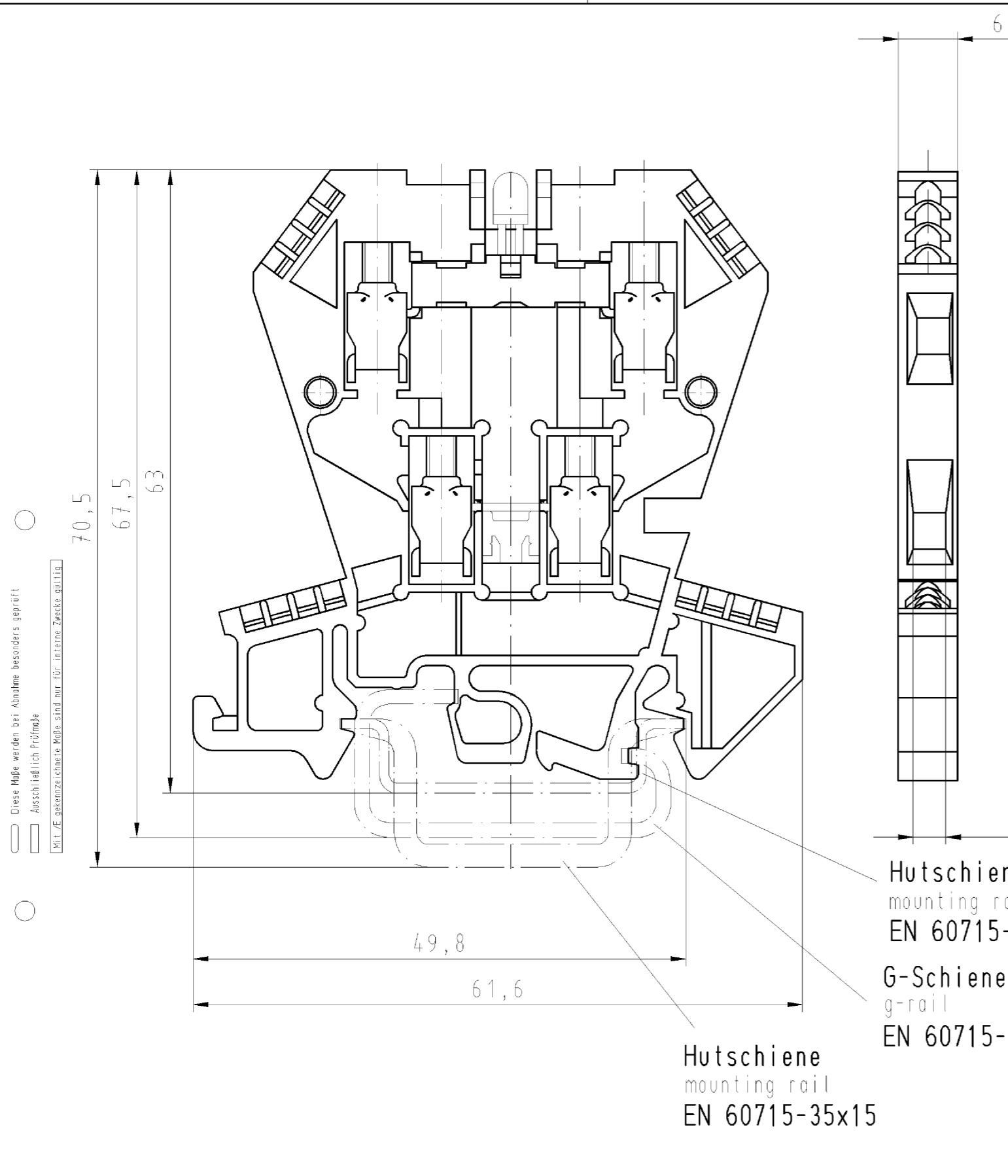
product compliance

ROHS conformity status	compliant
REACH-SVHC conformity status	compliant

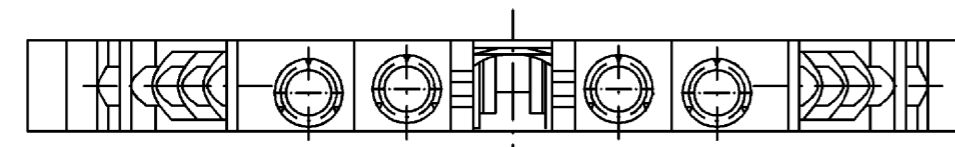
Accessories

Art.No.:	Article/type description:	Description:
Z7.256.4227.0	jumper bar IVBS WK4 E - 2	Jumper comp, insulated for DIN rail terminal blocks type WK ..., 2 - pole
Z7.256.4327.0	jumper bar IVBS WK4 E - 3	Jumper comp, insulated for DIN rail terminal blocks type WK ..., 3 - pole
Z7.256.4627.0	jumper bar IVBS WK4 E - 6	Jumper comp, insulated for DIN rail terminal blocks type WK ..., 6 - pole
Z7.256.5027.0	jumper bar IVBS WK4 E - 10	Jumper comp, insulated for DIN rail terminal blocks type WK ..., 10 - pole
Z7.256.5227.0	jumper bar IVBS WK4 E - 12	Jumper comp, insulated for DIN rail terminal blocks type WK ..., 12 - pole
07.311.4055.0	end plate AP 4 E /V0	End plate for DIN rail terminal blocks type WK 4 E..., color: grey
07.311.5055.0	partition TW 4 E /V0	Partition for DIN rail terminal blocks type WK 4 E..., color: grey
Z7.210.3227.0	jumper bar 9215 - 2	Cross connector for DIN rail terminal blocks type WK 4 ..., 2-pole
Z7.210.3327.0	jumper bar 9215 - 3	Cross connector for DIN rail terminal blocks type WK 4 ..., 3-pole
Z7.210.3427.0	jumper bar 9215 - 4	Cross connector for DIN rail terminal blocks type WK 4 ..., 4-pole
Z7.210.3627.0	jumper bar 9215 - 6	Cross connector for DIN rail terminal blocks type WK 4 ..., 6-pole

Z7.255.2227.0	jumper bar IVB WK4 E - 2	Jumper comp, insulated for DIN rail terminal blocks type WK ..., 2 -pole
Z7.255.2327.0	jumper bar IVB WK4 E - 3	Jumper comp, insulated for DIN rail terminal blocks type WK ..., 3 -pole
Z7.255.2727.0	jumper bar IVB WK4 E - 7	Jumper comp, insulated for DIN rail terminal blocks type WK ..., 7 -pole
Z7.255.3227.0	jumper bar IVB WK4 E - 12	Jumper comp, insulated for DIN rail terminal blocks type WK ..., 12 -pole
Z7.271.2227.0	insulated jumper bar IVB WK4 E/U- 2	Cross connector, insulated for DIN rail terminal blocks type WK ..., 2 -pole
Z7.271.2327.0	insulated jumper bar IVB WK4 E/U- 3	Cross connector, insulated for DIN rail terminal blocks type WK ..., 3 -pole
Z7.271.2427.0	insulated jumper bar IVB WK4 E/U- 4	Cross connector, insulated for DIN rail terminal blocks type WK ..., 4 -pole
Z7.271.2527.0	insulated jumper bar IVB WK4 E/U- 5	Cross connector, insulated for DIN rail terminal blocks type WK ..., 5 -pole
Z7.271.2627.0	insulated jumper bar IVB WK4 E/U- 6	Cross connector, insulated for DIN rail terminal blocks type WK ..., 6 -pole
Z7.271.3027.0	insulated jumper bar IVB WK4 E/U-10	Cross connector, insulated for DIN rail terminal blocks type WK ..., 10 -pole
Z7.271.3227.0	insulated jumper bar IVB WK4 E/U-12	Cross connector, insulated for DIN rail terminal blocks type WK ..., 12 -pole
98.300.1000.0	mounting rail TS 35x7,5 PERF 15mm - l:2000mm	Mounting rail TS 35, slotted, size 7,5 mm, length 2 m, material steel. galv. zinc-plated and passivated



○ Diese Maße werden bei Abnahme besonders geprüft
 ○ Ausschließlich Prüfmaße
 ○ Mit AE gekennzeichnete Maße sind nur für interne Zwecke gültig



Weitere Daten siehe Katalog
 further data see catalog

Teile-Nr. /part-nr.	Typ/type WK4 E/U...	LED-Farbe LED-colour	mit gedrehter Diode with inverted diode	
57.404.8355.5	...G-URL			
57.404.8055.9	...G-ULR		X	
57.404.8255.5	...G0			
57.404.8155.9	...GU		X	
57.404.7255.5	...LD+P0	rot/red		
57.404.8755.5	..LDG+P024	grün/green		
57.404.7455.9	..LD-PO 24	rot/red		
57.404.7955.5	...G2			
57.404.8855.9	...G2/1		X	
57.404.8455.5	...LD 42	rot/red		
57.404.6255.9	...LD+P0 24LD	rot/red		

Weitergabe sowie Vervielfältigung dieses Dokuments, Verwertung und Mitteilung
 seiner Inhalte ist ohne schriftliche Genehmigung der Wieland-Werke AG.
 The publication, distribution and utilization of the contents as well as the
 communication of its contents to others without express authorization is prohibited.

R=2,2K
0,35W

R=2,2K
0,35W

1A/1000V

1A/1000V
R=6,8K
0,6W

1A/1000V
R=2,2K
0,35W

Freitoleranz nach		CAD - Zeichnung, keine manuellen Änderungen			1. Verwendung: -		Bl.: 1 von 1		
	Maßstab	Werkstoff und Oberfläche:		2003	Tag	Name		Zeichnung Nr. T 57.404.6255.9 01K	Index
	2:1			Entworfen	15.05.	Schmitt J.			
				Geprüft	-				
	Vol.	mm ³	Dtl.	mm ²	Normgepr.	-	Ersatz für: -		
		wieland		WK 4 E/U ...		Benennung ETAGENKLEMME modular double-deck terminal			
Buchstabe	Datum / Blatt		Änderung						