

# Rotary Cam Switch CSxxA

- Range of rotary cam switches with choice of 4 operators
- Key operators permit key removal in all latched positions
- Finger proof screw terminals to IP20 protection
- UL approved
- Designed to IEC 60947-3
- Switch body supplied with legend plate for use with square escutcheon frame actuator



## Options & Ordering Codes

**CS**   **20A** - **PM** - **XX**   **+G2**

Series  
Rotary Cam Switches   **CS**

Rated Thermal Current

20 Amp I <sub>th</sub>	20A
32 Amp I <sub>th</sub>	32A
50 Amp I <sub>th</sub>	50A

Mounting

Single Hole Mounting (22.5mm) IP65	
Panel Mounting IP65 (IP40 for CS50A)	<b>PM</b>
DIN Rail Mounting IP40	<b>DM</b>

Choose from list of available switch options - found overleaf

**+G2**   With Handle (only for Panel & DIN Rail Mounting)

## Accessories

Spare Key	B4-R455
Tightening Wrench	J7049

## Specification

Data according to IEC 60947-3, VDE 0660, GB14048.3

	CS20A	CS32A	CS50A
Rated thermal current I <sub>th</sub>	20A	32A	50A
Rated operational voltage U <sub>e</sub> IEC/VDE/BS	690V		
Utilisation category AC21A, AC21B	20A	32A	50A
Utilisation category AC23B 400V	16A	30A	45A
Utilisation category AC15 220/240V 380/440V	6A 4A	12A 6A	16A 7A
Utilisation category DC21A, DC21B 30V	20A	32A	40A
Cable cross connection	0.75-2.5 mm <sup>2</sup>	1.0-4.0 mm <sup>2</sup>	1.5-6 mm <sup>2</sup>
Contact material	Silver Alloy		
Mounting hole diameter	22.5mm		
Maximum backup fuse (gl)	20A	35A	50A
Protection class from rear	IP20		
Ambient Temperature	-40 to +60°C		
Storage Temperature	-50 to +90°C		

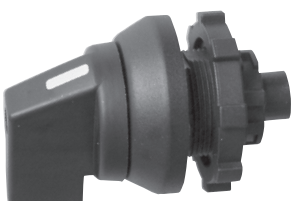
Data according to UL and cUL

	CS20A	CS32A	CS50A	
Operational current (general use)	20A	35A	60A	
Rated operational voltage U <sub>e</sub>	600V			
Rated Insulation Voltage* U <sub>i</sub>	660V			
DOL-Rating 3-Phase	110-120V 220-240V 440-480V 550-600V	1.5hp 3.0hp 5.0hp 7.5hp	5.0hp 5.0hp 10.0hp 15.0hp 30.0hp	7.5hp 15.0hp 25.0hp 30.0hp
DOL-Rating 1-Phase	110-120V 220-240V	0.5hp 1.5hp	1.5hp 5.0hp	3.0hp 7.5hp
Heavy Pilot Duty (AC)	A600			
Cable cross connection (solid)	12-20AWG	10-18AWG	10-12AWG	
Cable cross connection (flexible)	14-20AWG	8-18AWG	6-12AWG	
Tightening Torque	1-1.4Nm	1.7-1.8Nm	1.2-1.8Nm	
Maximum backup fuse (gl)	40A	80A	150A	

\* Test voltage between open contacts is 2200V (1000V + 2 x U<sub>e</sub>)

## Handle Operators

**RB2** Round Bezel



**SP2** Square Escutcheon



## Key Operators

**RBK2** Round Bezel



**SPK2** Square Escutcheon



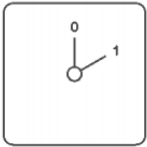
# Rotary Cam Switch CSxxA



Technical Datasheet

## Options & Ordering Codes continued

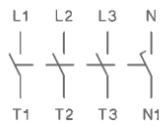
### Off-On Switch



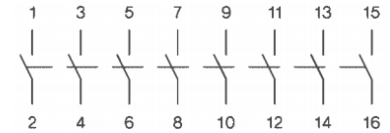
Description	Cells	Part Number
1 Pole	1	CSXXA-XX-A1
2 Pole	1	CSXXA-XX-A2
3 Pole	2	CSXXA-XX-A3
4 Pole	2	CSXXA-XX-A4
6 Pole	3	CSXXA-XX-A6
8 Pole	3	CSXXA-XX-A8

### Connection Diagram

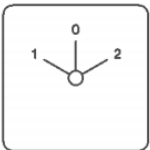
For 1-4 poles



For 6-8 poles



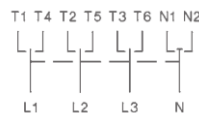
### Changeover switches, with off



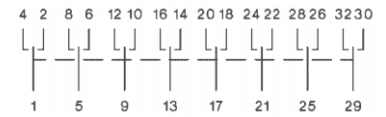
Description	Cells	Part Number
1 Pole	1	CSXXA-XX-U1
2 Pole	2	CSXXA-XX-U2
3 Pole	3	CSXXA-XX-U3
4 Pole	4	CSXXA-XX-U4
6 Pole	6	CSXXA-XX-U6
8 Pole	8	CSXXA-XX-U8

### Connection Diagram

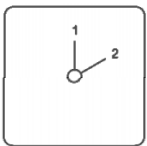
For 1-4 poles



For 6-8 poles



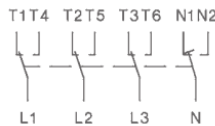
### Changeover switches, without off



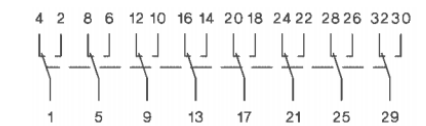
Description	Cells	Part Number
1 Pole	1	CSXXA-XX-W1
2 Pole	2	CSXXA-XX-W2
3 Pole	3	CSXXA-XX-W3
4 Pole	4	CSXXA-XX-W4
6 Pole	6	CSXXA-XX-W6
8 Pole	8	CSXXA-XX-W8

### Connection Diagram

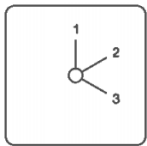
For 1-4 poles



For 6-8 poles



### 3 position step switches, without off

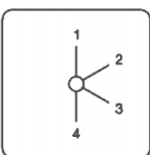


Description	Cells	Part Number
1 Pole	2	CSXXA-XX-ST31
2 Pole	3	CSXXA-XX-ST32
3 Pole	5	CSXXA-XX-ST33

### Connection Diagram



### 4 position step switches, without off

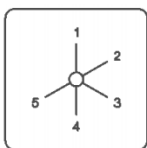


Description	Cells	Part Number
1 Pole	2	CSXXA-XX-ST41
2 Pole	4	CSXXA-XX-ST42
3 Pole	6	CSXXA-XX-ST43

### Connection Diagram

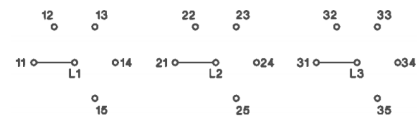


### 5 position step switches, without off

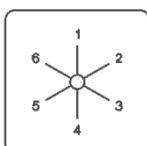


Description	Cells	Part Number
1 Pole	3	CSXXA-XX-ST51
2 Pole	5	CSXXA-XX-ST52
3 Pole	8	CSXXA-XX-ST53

### Connection Diagram

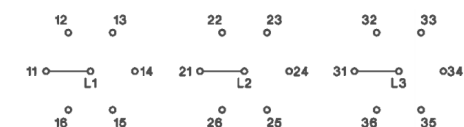


### 6 position step switches, without off



Description	Cells	Part Number
1 Pole	3	CSXXA-XX-ST61
2 Pole	6	CSXXA-XX-ST62
3 Pole	9	CSXXA-XX-ST63

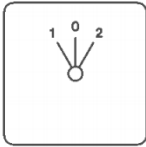
### Connection Diagram



# Rotary Cam Switch CSxxA

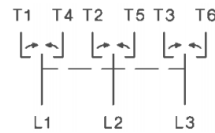
## Options & Ordering Codes continued

Changeover switch,  
with spring return to off

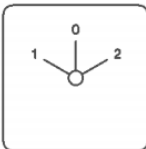


Description	Cells	Part Number
1 Pole	1	CSXXA-XX-UR1
2 Pole	2	CSXXA-XX-UR2
3 Pole	3	CSXXA-XX-UR3

Connection Diagram

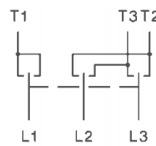


3 phase motor  
reversing switch

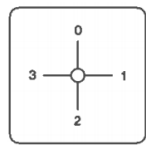


Description	Cells	Part Number
20A : 5.5kW @ 3~440V	3	CSXXA-XX-WU3

Connection Diagram

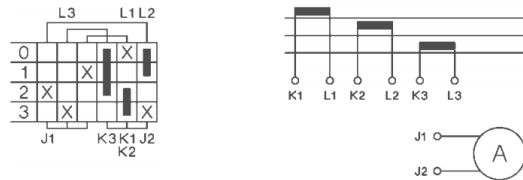


3 current  
transformers

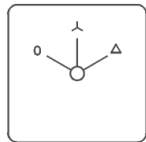


Description	Cells	Part Number
1 Pole	3	CSXXA-XX-M31

Connection Diagram

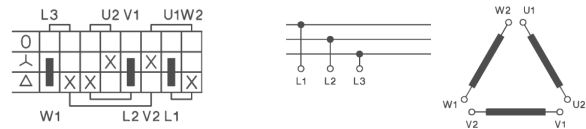


Star Delta switches



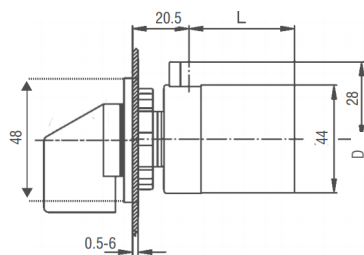
Description	Cells	Part Number
1 Rotary Direction 20A : 5.5kW @ 3~440V	4	CSXXA-XX-SD

Connection Diagram

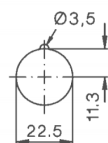


## Dimensions (mm)

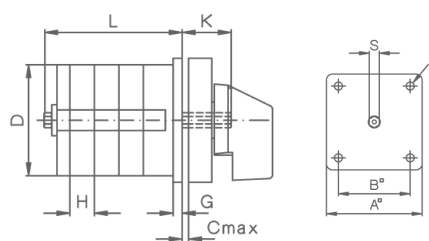
Central Fixing 22.5mm CSXXA



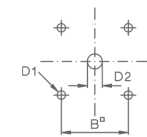
Mounting Hole



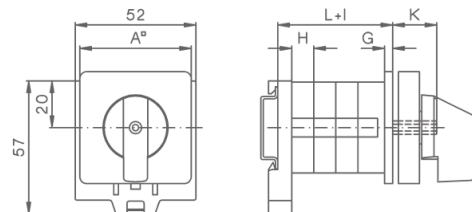
Panel Mounting



Mounting Hole  
(Built in from rear)



DIN Rail Mounting



Type	Number of Additional Cells - Increased Length (L)							
	1	2	3	4	5	6	7	8
CS20A	36.5	46	55.5	65	74.5	84	93.5	103
CS32A	38.5	51	63.5	76	88.5	101	113.5	126
CS50A	44	59.5	75	90.5	106	121.5	137	152.5

	A	B	C	D	D1	D2	E	G	H	K	I	S
CS20A	48	36	5	44 <sup>1)</sup>	5	8	4	3.5	9.5	19	6	SW5
CS32A	48	36	5	56	5	8	4	3.5	12.5	19	6	SW5
CS50A	64	48	5	58 <sup>2)</sup>	5	12	4.2	3	15.5	20	0	SW7

<sup>1)</sup> 44.5 x 42  
<sup>2)</sup> 58 x 58