

WDK 2.5 2D**Weidmüller Interface GmbH & Co. KG**

Klingenbergstraße 26

D-32758 Detmold

Germany

www.weidmueller.com

Product image

Why not integrating simple electrical functions into a feed through terminal. It has the same slim design of our feed-through terminal blocks - with additional functions such as cross-connections that can be used. Often, you only need a small component to integrate an external device into your automation technology. Our modular terminal blocks with electronic components make this possible; quickly, simply, and with a perfect fit.

General ordering data

| | |
|------------|---|
| Version | Component terminal block, Screw connection, 2.5 mm ² , 400 V, 0.5 A, Diode 1N 4007, Diode 1N 4007, TS 35, dark beige |
| Order No. | 1023500000 |
| Type | WDK 2.5 2D |
| GTIN (EAN) | 4008190100865 |
| Qty. | 25 pc(s). |

Creation date June 28, 2024 6:11:23 PM CEST

Catalogue status 14.06.2024 / We reserve the right to make technical changes.

WDK 2.5 2D

Weidmüller Interface GmbH & Co. KG

Klingenbergstraße 26

D-32758 Detmold

Germany

www.weidmueller.com

Technical data

Dimensions and weights

| | | | |
|--------------------------|------------|----------------|------------|
| Depth | 62.5 mm | Depth (inches) | 2.461 inch |
| Depth including DIN rail | 63 mm | Height | 69 mm |
| Height (inches) | 2.717 inch | Width | 5.1 mm |
| Width (inches) | 0.201 inch | Net weight | 12.39 g |

Temperatures

| | | | |
|----------------------------------|----------------|----------------------------------|--------|
| Storage temperature | -25 °C...55 °C | Continuous operating temp., min. | -50 °C |
| Continuous operating temp., max. | 120 °C | | |

Material data

| | | | |
|---------------------------|-------|--------|------------|
| Material | Wemid | Colour | dark beige |
| UL 94 flammability rating | V-0 | | |

System specifications

| | | | |
|-------------------------------------|---|-------------------------------|-----|
| Version | Screw connection, with diode, for screwable cross-connection, One end without connector | End cover plate required | Yes |
| Number of potentials | 1 | Number of levels | 2 |
| Number of clamping points per level | 2 | Number of potentials per tier | 1 |
| Levels cross-connected internally | Yes | PE connection | No |
| Rail | TS 35 | N-function | No |
| PE function | No | PEN function | No |

2 clampable conductors (H05V/H07V) with equal cross-section (rated connection)

| | | | |
|--|---------------------|--|---------------------|
| Wire connection cross section, finely stranded with wire-end ferrules DIN 46228/1, 2 clampable wires, max. | 1.5 mm ² | Wire connection cross section, finely stranded with wire-end ferrules DIN 46228/1, 2 clampable wires, min. | 0.5 mm ² |
| Wire connection cross section, finely stranded, two clampable wires, min. | 0.5 mm ² | Wire cross-section, finely stranded, two clampable wires, max. | 1.5 mm ² |

Additional technical data

| | | | |
|--------------------------|-------|-----------------------------|---------|
| Explosion-tested version | No | Number of similar terminals | 1 |
| Open sides | right | Type of mounting | Snap-on |

CSA rating data

| | | | |
|-------------------------------|----------------|-------------------------------|--------|
| Certificate No. (CSA) | 200039-1494105 | Current size C (CSA) | 10 A |
| Voltage size C (CSA) | 300 V | Wire cross section max. (CSA) | 12 AWG |
| Wire cross section min. (CSA) | 26 AWG | | |

Component

| | | |
|-----------------|-----------------|---------|
| Component diode | Type diode | 1N4007 |
| | Forward current | 1 A |
| | Reverse voltage | 1,300 V |
| | Forward voltage | 0.7 V |

WDK 2.5 2D

Weidmüller Interface GmbH & Co. KG

Klingenbergstraße 26

D-32758 Detmold

Germany

www.weidmueller.com

Technical data

Conductors for clamping (rated connection)

| | | | |
|---|----------------------|---|---------------------|
| Blade size | 0.6 x 3.5 mm | Clamping range, max. | 4 mm ² |
| Clamping range, min. | 0.05 mm ² | Clamping screw | M 2.5 |
| Connection cross-section, stranded, max. | 4 mm ² | Connection cross-section, stranded, min. | 1.5 mm ² |
| Connection direction | on side | Gauge to IEC 60947-1 | A3 |
| Number of connections | 4 | Stripping length | 10 mm |
| Tightening torque, max. | 0.6 Nm | Tightening torque, min. | 0.4 Nm |
| Type of connection | Screw connection | Type of connection 2 | Screw connection |
| Wire connection cross section AWG, max. | AWG 12 | Wire connection cross section AWG, min. | AWG 26 |
| Wire connection cross section, finely stranded, max. | 4 mm ² | Wire connection cross section, finely stranded, min. | 0.5 mm ² |
| Wire connection cross-section, finely stranded with wire-end ferrules DIN 46228/1, max. | 2.5 mm ² | Wire connection cross-section, finely stranded with wire-end ferrules DIN 46228/1, min. | 0.5 mm ² |
| Wire connection cross-section, solid core, max. | 4 mm ² | Wire connection cross-section, solid core, min. | 0.5 mm ² |

Dimensions

| | |
|--------------|---------|
| TS 35 offset | 35.5 mm |
|--------------|---------|

General

| | | | |
|---|--------|---|---------------|
| Rail | TS 35 | Standards | IEC 60947-7-1 |
| Wire connection cross section AWG, max. | AWG 12 | Wire connection cross section AWG, min. | AWG 26 |

Rating data

| | | | |
|--|---------------------|---------------------------------|---------------|
| Rated cross-section | 2.5 mm ² | Rated voltage | 400 V |
| Rated DC voltage | 400 V | Rated current | 0.5 A |
| Current at maximum wires | 0.5 A | Standards | IEC 60947-7-1 |
| Volume resistance according to IEC 60947-7-x | 1.33 mΩ | Rated impulse withstand voltage | 6 kV |
| Power loss in accordance with IEC 60947-7-x | 0.77 W | Pollution severity | 3 |

UL rating data

| | | | |
|---|--------|---|--------|
| Certificate No. (UR) | E60693 | Conductor size Factory wiring max. (UR) | 12 AWG |
| Conductor size Factory wiring min. (UR) | 22 AWG | Conductor size Field wiring max. (UR) | 12 AWG |
| Conductor size Field wiring min. (UR) | 22 AWG | Current size B (UR) | 20 A |
| Current size C (UR) | 20 A | Voltage size B (UR) | 300 V |
| Voltage size C (UR) | 300 V | | |

Classifications

| | | | |
|-------------|-------------|-------------|-------------|
| ETIM 6.0 | EC000903 | ETIM 7.0 | EC000903 |
| ETIM 8.0 | EC000903 | ETIM 9.0 | EC000903 |
| ECLASS 9.0 | 27-14-11-27 | ECLASS 9.1 | 27-14-11-47 |
| ECLASS 10.0 | 27-14-11-27 | ECLASS 11.0 | 27-14-11-27 |
| ECLASS 12.0 | 27-14-11-27 | ECLASS 13.0 | 27-25-01-14 |

WDK 2.5 2D

Weidmüller Interface GmbH & Co. KG

Klingenbergstraße 26

D-32758 Detmold

Germany

www.weidmueller.com

Technical data

Environmental Product Compliance

| | |
|------------|--------------------------------------|
| REACH SVHC | Lead 7439-92-1 |
| SCIP | a3090896-Of16-410d-aabb-617cfb571002 |

Important note

| | |
|---------------------|--|
| Product information | Rated current 10 A only for the continuous currentbar. Components may reduce the rated current and the rated voltage. The permissible continuous operating temperature must be observed. The allowed continuous operating temperature must be observed |
|---------------------|--|

Approvals

Approvals



| | |
|-----------------------|------------|
| ROHS | Conform |
| UL File Number Search | UL Website |
| Certificate No. (UR) | E60693 |

Downloads

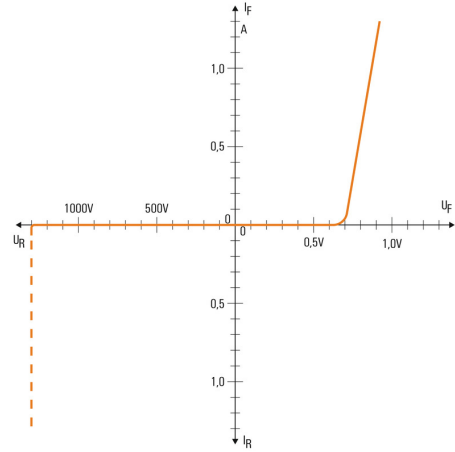
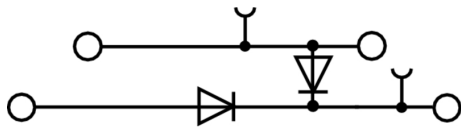
| | |
|---|--|
| Approval/Certificate/Document of Conformity | CE Declaration of Conformity UKCA declaration of conformity Confirmation of Standards EN 45545-2_2020-10 |
| Engineering Data | CAD data – STEP |
| Engineering Data | Zuken E3.S |
| User Documentation | StorageConditionsTerminalBlocks |
| Catalogues | Catalogues in PDF-format |
| Brochures | |

WDK 2.5 2D

Weidmüller Interface GmbH & Co. KG
Klingenbergstraße 26
D-32758 Detmold
Germany

www.weidmueller.com

Drawings



WDK 2.5 2D

Weidmüller Interface GmbH & Co. KG
 Klingenbergstraße 26
 D-32758 Detmold
 Germany

www.weidmueller.com

Accessories

SAK-Series



Weidmüller's range of products includes end brackets that guarantee a permanent, reliable mounting on the terminal rail and prevent sliding. Versions with and without screws are available. The end brackets include marking options, also for group markers, and also a test plug holder.

General ordering data

| | | |
|------------|----------------------------|---|
| Type | EW 35 | Version |
| Order No. | 0383560000 | End bracket, Wemid, beige, Rail: TS 35, when screwed in |
| GTIN (EAN) | 4008190181314 | |
| Qty. | 50 pc(s). | |

Combined screwing and cutting tool "Swifty®"

Combined cutting/screwing tool: Swifty® and Swifty® set for clean cutting of copper cables up to 1.5 mm² (solid) and 2.5 mm² (flexible)



General ordering data

| | | |
|------------|----------------------------|-------------------------------------|
| Type | SWIFTY | Version |
| Order No. | 9006020000 | Cutting tool for one-hand operation |
| GTIN (EAN) | 4032248257409 | |
| Qty. | 1 pc(s). | |

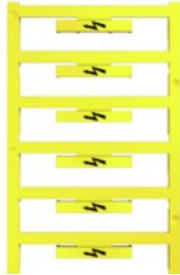
WDK 2.5 2D

Weidmüller Interface GmbH & Co. KG
 Klingenbergstraße 26
 D-32758 Detmold
 Germany

www.weidmueller.com

Accessories

With lightning flash



The WAD connector marker is suitable for W-series terminals and for the WEW 35/2 and ZEW 35/2 end brackets. The markers are available as blank markers, with custom printing or standard print with lightning symbol. The WAD MultiCard markers are suitable for labelling with PrintJet CONNECT printers.

For custom printing: Please send us a file of our labeling software M-Print PRO or M-Print PRO Online (without installation) for your labeling specifications.

General ordering data

| | | |
|------------|----------------------------|---|
| Type | WAD 5 MC B GE/SW | Version |
| Order No. | 1120450000 | Group markers, Cover, 33.3 x 5 mm, Pitch in mm (P): 5.00 WDU 2.5, |
| GTIN (EAN) | 4032248901272 | WEW 35/2, ZEW 35/2, yellow |
| Qty. | 48 pc(s). | |

Blank



The Dekafix (DEK) marker is the universal marker for all conductor and plug-in connectors as well as for electronic sub-assemblies. The system is ideal for short number sequences and covers a wide range of ready-printed markers.

Strips for fast installation in only one work step. The printing is easy to read, rich in contrast and available in various widths.

- Large range of ready-to-use markers
- Strips for fast installation
- Terminal markers, suitable for all Weidmüller cable connectors
- Available as blank MultiCard or with standard printing

For custom printing: Please send us a file of our labeling software M-Print PRO or M-Print PRO Online (without installation) for your labeling specifications.

General ordering data

| | | |
|------------|----------------------------|---|
| Type | DEK 5/5 MC NE WS | Version |
| Order No. | 1609801044 | Dekafix, Terminal marker, 5 x 5 mm, Pitch in mm (P): 5.00 |
| GTIN (EAN) | 4008190397111 | Weidmueller, white |
| Qty. | 1,000 pc(s). | |

WDK 2.5 2D

Weidmüller Interface GmbH & Co. KG
 Klingenbergstraße 26
 D-32758 Detmold
 Germany

www.weidmueller.com

Accessories

Marker holder



The marker holder offer the possibility of additional mounting of standard markers with a pitch of 5 or 5.1 mm. The angled holders can be optionally snapped together and could be mounted in all standard marking channels of the Klippon® Connect modular terminal blocks. Fitting marker types could be found under the respective accessories of the designation marking holder.

General ordering data

| | | |
|------------|----------------------------|----------------------------|
| Type | BZT 1 ZA WS 10/5 | Version |
| Order No. | 1805520000 | Accessories, Marker holder |
| GTIN (EAN) | 4032248270248 | |
| Qty. | 100 pc(s). | |
| Type | BZT 1 WS 10/5 | Version |
| Order No. | 1805490000 | Accessories, Marker holder |
| GTIN (EAN) | 4032248270231 | |
| Qty. | 100 pc(s). | |

2.5 mm²



Screwable cross-connections are easy to mount and de mount. Thanks to the big contact surface, even high currents can be transmitted with maximum contact reliability.

General ordering data

| | | |
|------------|----------------------------|--|
| Type | WQV 2.5/5 | Version |
| Order No. | 1053960000 | Cross-connector (terminal), when screwed in, Number of poles: 5, |
| GTIN (EAN) | 4008190158446 | Pitch in mm (P): 5.10, Insulated: Yes, 32 A, yellow |
| Qty. | 10 pc(s). | |
| Type | WQV 2.5/3 | Version |
| Order No. | 1053760000 | Cross-connector (terminal), when screwed in, Number of poles: 3, |
| GTIN (EAN) | 4008190058999 | Pitch in mm (P): 5.10, Insulated: Yes, 32 A, yellow |
| Qty. | 50 pc(s). | |
| Type | WQV 2.5/2 | Version |
| Order No. | 1053660000 | Cross-connector (terminal), when screwed in, Number of poles: 2, |
| GTIN (EAN) | 4008190031121 | Pitch in mm (P): 5.10, Insulated: Yes, 32 A, yellow |
| Qty. | 50 pc(s). | |
| Type | WQV 2.5/4 | Version |
| Order No. | 1053860000 | Cross-connector (terminal), when screwed in, Number of poles: 4, |
| GTIN (EAN) | 4008190049706 | Pitch in mm (P): 5.10, Insulated: Yes, 32 A, yellow |
| Qty. | 50 pc(s). | |

WDK 2.5 2D

Weidmüller Interface GmbH & Co. KG
Klingenbergstraße 26
D-32758 Detmold
Germany

www.weidmueller.com

Accessories

| | | |
|------------|----------------------------|---|
| Type | WQV 2.5/7 | Version |
| Order No. | 1054160000 | Cross-connector (terminal), when screwed in, Number of poles: 7, |
| GTIN (EAN) | 4008190011246 | Pitch in mm (P): 5.10, Insulated: Yes, 32 A, yellow |
| Qty. | 10 pc(s). | |
| Type | WQV 2.5/15 | Version |
| Order No. | 1059660000 | Cross-connector (terminal), when screwed in, Number of poles: 15, |
| GTIN (EAN) | 4008190002411 | Pitch in mm (P): 5.10, Insulated: Yes, 32 A, yellow |
| Qty. | 10 pc(s). | |
| Type | WQV 2.5/32 | Version |
| Order No. | 1577600000 | Cross-connector (terminal), when screwed in, Number of poles: 32, |
| GTIN (EAN) | 4008190154035 | Pitch in mm (P): 5.10, Insulated: Yes, 32 A, yellow |
| Qty. | 10 pc(s). | |
| Type | WQV 2.5/8 | Version |
| Order No. | 1054260000 | Cross-connector (terminal), when screwed in, Number of poles: 8, |
| GTIN (EAN) | 4008190073572 | Pitch in mm (P): 5.10, Insulated: Yes, 32 A, yellow |
| Qty. | 10 pc(s). | |
| Type | WQV 2.5/30 | Version |
| Order No. | 1067500000 | Cross-connector (terminal), when screwed in, Number of poles: 30, |
| GTIN (EAN) | 4008190031107 | Pitch in mm (P): 5.10, Insulated: Yes, 32 A, yellow |
| Qty. | 10 pc(s). | |
| Type | WQV 2.5/20 | Version |
| Order No. | 1577570000 | Cross-connector (terminal), when screwed in, Number of poles: 20, |
| GTIN (EAN) | 4008190125868 | Pitch in mm (P): 5.10, Insulated: Yes, 32 A, yellow |
| Qty. | 10 pc(s). | |
| Type | WQV 2.5/10 | Version |
| Order No. | 1054460000 | Cross-connector (terminal), when screwed in, Number of poles: 10, |
| GTIN (EAN) | 4008190135089 | Pitch in mm (P): 5.10, Insulated: Yes, 32 A, yellow |
| Qty. | 20 pc(s). | |
| Type | WQV 2.5/6 | Version |
| Order No. | 1054060000 | Cross-connector (terminal), when screwed in, Number of poles: 6, |
| GTIN (EAN) | 4008190102272 | Pitch in mm (P): 5.10, Insulated: Yes, 32 A, yellow |
| Qty. | 10 pc(s). | |

2.5 mm²

End plates are fitted to the open side of the last modular terminal before the end bracket. The use of an end plate ensures the function of the modular terminal and the specified rated voltage. It guarantees protection against contact with live parts and makes the final terminal finger-proof.

General ordering data

| | | |
|------------|----------------------------|---|
| Type | WAP WDK2.5 | Version |
| Order No. | 1059100000 | End plate (terminals), 69 mm x 1.5 mm, dark beige |
| GTIN (EAN) | 4008190101954 | |
| Qty. | 20 pc(s). | |

Creation date June 28, 2024 6:11:23 PM CEST

Catalogue status 14.06.2024 / We reserve the right to make technical changes.

WDK 2.5 2D

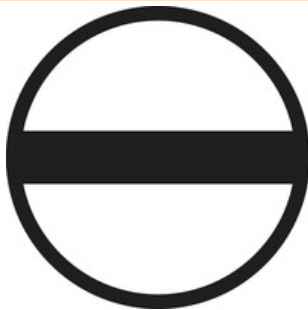
Weidmüller Interface GmbH & Co. KG
 Klingenbergstraße 26
 D-32758 Detmold
 Germany

www.weidmueller.com

Accessories

| | | |
|------------|----------------------------|--|
| Type | WAP WDK2.5 BL | Version |
| Order No. | 1059180000 | End plate (terminals), 69 mm x 1.5 mm, blue |
| GTIN (EAN) | 4008190081089 | |
| Qty. | 20 pc(s). | |
| Type | WAP WDK2.5 GN | Version |
| Order No. | 1059140000 | End plate (terminals), 69 mm x 1.5 mm, green |
| GTIN (EAN) | 4008190901790 | |
| Qty. | 20 pc(s). | |

Slotted screwdriver

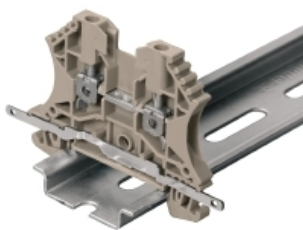


Slotted screwdriver with rounded blade SD DIN 5265, ISO 2380/2, output to DIN 5264, ISO 2380/1. ChromTop tip, SoftFinish grip

General ordering data

| | | |
|------------|----------------------------|--------------------------|
| Type | SDS 0.6X3.5X100 | Version |
| Order No. | 9008330000 | Screwdriver, Screwdriver |
| GTIN (EAN) | 4032248056286 | |
| Qty. | 1 pc(s). | |

Shielding connection



With the LS 2.8 WDU2.5-10, many feed-through modular terminal blocks from the W series can be converted very easily. Inserting the LS 2.8 WDU2.5-10 allows the cable shielding braid to be looped through directly at the terminal block by soldering or using a suitable flat cable lug.

General ordering data

| | | |
|------------|----------------------------|----------------------|
| Type | LS 2.8 WDU2.5-10 | Version |
| Order No. | 1056400000 | W-Series, Shield bus |
| GTIN (EAN) | 4008190036454 | |
| Qty. | 100 pc(s). | |

WDK 2.5 2D

Weidmüller Interface GmbH & Co. KG
 Klingenbergstraße 26
 D-32758 Detmold
 Germany

www.weidmueller.com

Accessories

W-Series



Weidmüller's range of products includes end brackets that guarantee a permanent, reliable mounting on the terminal rail and prevent sliding. Versions with and without screws are available. The end brackets include marking options, also for group markers, and also a test plug holder.

General ordering data

| | | |
|------------|---------------------------|--|
| Type | WEW 35/2 | Version |
| Order No. | 106120000 | End bracket, Wemid, dark beige, Rail: TS 35, when screwed in |
| GTIN (EAN) | 4008190030230 | |
| Qty. | 50 pc(s). | |

Blank



WS markers are the perfect match for the W-series connectors. Thanks to their system compatibility, the WS tags can also be used with the I-series and the Z-series. The large marking surfaces do not only permit long character strings but also multi-line text. WS markers are ideal for labels with long, customised character strings. Thanks to the proven MultiCard format, printing with PrintJet CONNECT oder/or Plotter is possible.

- Can be fitted in strips or individually
- Markers in proven MultiCard format

For custom printing: Please send us a file of our labeling software M-Print PRO or M-Print PRO Online (without installation) for your labeling specifications.

General ordering data

| | | |
|------------|---------------------------|---|
| Type | WS 8/5 MC NE WS | Version |
| Order No. | 164074000 | WS, Terminal marker, 8 x 5 mm, Pitch in mm (P): 5.00 Weidmueller, |
| GTIN (EAN) | 4008190279103 | Allen-Bradley, white |
| Qty. | 720 pc(s). | |