

## Data sheet

Commercial Art.No.: 57.404.6955.1

multi-tier terminal WK 4E/UVB SW/V0

Multi-tier terminal block with screw connection for mounting on TS 35 and TS 32, nominal cross section 4 mm<sup>2</sup>, width 6 mm, color black



Commercial Art.No.	57.404.6955.1
EAN	4015573506077
Order Unit	100

certificates / approvals



**ATEX**



## Technical data

### general

nominal cross section	4 mm <sup>2</sup>
color	black
number of levels	2
number of clamp positions per level	2
width/grid dimension	6 mm
insulating housing	PA666
flammability class of insulation material acc. with UL94	V0
explosion-tested version "Ex e"	no
mounting method	DIN rail (top hat rail)/G-rail
terminal blocks for electrical installations	no

### technical data

rated current	32 A
rated voltage	400 V
rated impulse voltage	6 kV
pollution degree	3
closing plate required	yes
type of insulation material	thermoplastic
length	61.6 mm

### connection data

connection type 1	screw connection
-------------------	------------------

connection type 2	screw connection
minimum cross section solid	0.5 mm <sup>2</sup>
maximum cross section solid	4 mm <sup>2</sup>
minimum cross section fine stranded	0.5 mm <sup>2</sup>
maximum cross section fine stranded	4 mm <sup>2</sup>
wire strip length	9 mm
torque conductor mounting	0.5 Nm

**technical data UL/CSA**

cross section UL	22-10 AWG
voltage UL	300 V
current factory wiring	20 A
current field wiring	20 A
cross section CSA	20-12 AWG
voltage CSA	300 V
current CSA	10 A

**classification**

ECLASS 11	
ECLASS 8.1	27141120
ETIM 9.0	EC000897
ETIM 8.0	EC000897
ETIM 7.0	EC000897
ETIM 6.0	EC000897
ETIM 5.0	EC000897
ETIM 4.0	EC000897
ETIM 3.0	EC000897

**product compliance**

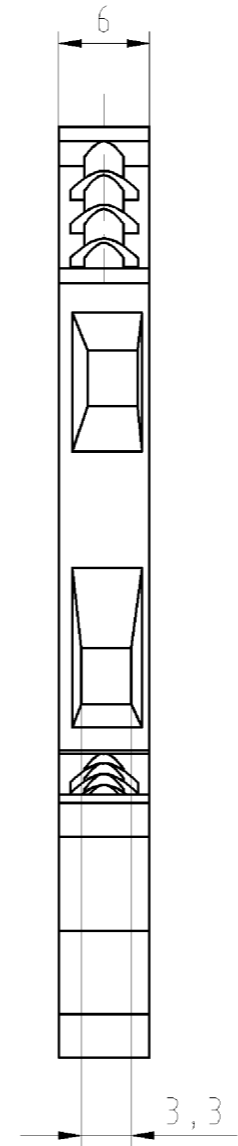
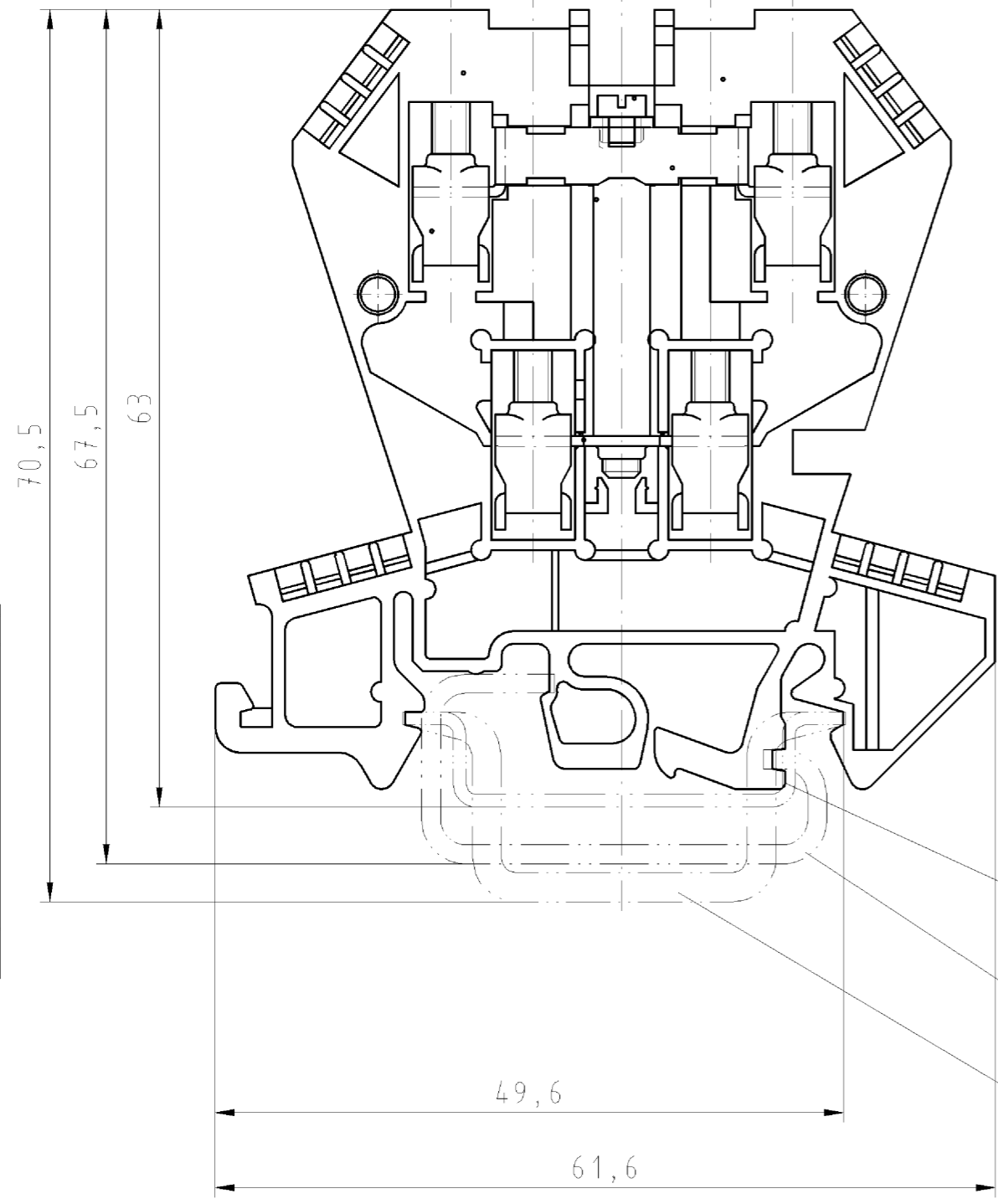
ROHS conformity status	compliant/exempted
ROHS exceptions	III-6(c)
REACH-SVHC conformity status	Duty-To-Declare
REACH-SVHC substances	Lead
REACH-SVHC CAS numbers	7439-92-1

**Accessories**

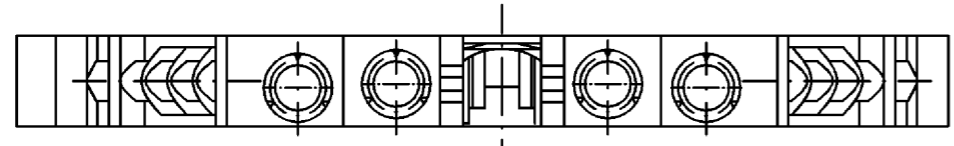
Commercial Art.No.:	Article-type description:	Description:
Z7.256.4227.0	jumper bar IVBS WK4 E - 2	Jumper comp, insulated for DIN rail terminal blocks type WK ..., 2 - pole
Z7.256.4327.0	jumper bar IVBS WK4 E - 3	Jumper comp, insulated for DIN rail terminal blocks type WK ..., 3 - pole
Z7.256.4627.0	jumper bar IVBS WK4 E - 6	Jumper comp, insulated for DIN rail terminal blocks type WK ..., 6 - pole
Z7.256.5027.0	jumper bar IVBS WK4 E - 10	Jumper comp, insulated for DIN rail terminal blocks type WK ..., 10 - pole
Z7.256.5227.0	jumper bar IVBS WK4 E - 12	Jumper comp, insulated for DIN rail terminal blocks type WK ..., 12 - pole
07.311.4055.0	end plate AP 4 E /V0	End plate for DIN rail terminal blocks type WK 4 E..., color: grey
07.311.5055.0	partition TW 4 E /V0	Partition for DIN rail terminal blocks type WK 4 E..., color: grey

Z7.210.3227.0	jumper bar 9215 - 2	Cross connector for DIN rail terminal blocks type WK 4 ..., 2-pole
Z7.210.3327.0	jumper bar 9215 - 3	Cross connector for DIN rail terminal blocks type WK 4 ..., 3-pole
Z7.210.3427.0	jumper bar 9215 - 4	Cross connector for DIN rail terminal blocks type WK 4 ..., 4-pole
Z7.210.3627.0	jumper bar 9215 - 6	Cross connector for DIN rail terminal blocks type WK 4 ..., 6-pole
Z7.255.2227.0	jumper bar IVB WK4 E - 2	Jumper comp, insulated for DIN rail terminal blocks type WK ..., 2 - pole
Z7.255.2327.0	jumper bar IVB WK4 E - 3	Jumper comp, insulated for DIN rail terminal blocks type WK ..., 3 - pole
Z7.255.2727.0	jumper bar IVB WK4 E - 7	Jumper comp, insulated for DIN rail terminal blocks type WK ..., 7 - pole
Z7.255.3227.0	jumper bar IVB WK4 E - 12	Jumper comp, insulated for DIN rail terminal blocks type WK ..., 12 - pole
04.242.6053.0	marking tag strips 9705 A / 6 / 10	Marking tag strips for DIN rail terminal blocks type 9700 A / 6..., 10 tags per strip, color: white, unmarked, markable with Wieplot plotter-system
98.300.1000.0	mounting rail TS 35x7,5 PERF 15mm - l:2000mm	Mounting rail TS 35, slotted, size 7,5 mm, length 2 m, material steel. galv. zinc-plated and passivated

○ Diese Maße werden bei Abnahme besonders geprüft  
 ○ Ausschließlich Prüfmaße  
 ○ Mit AE gekennzeichnete Maße sind nur für interne Zwecke gültig



- Hutschiene EN 60715-35x7,5  
mounting rail EN 60715-35x7,5
- G-Schiene EN 60715-G 32  
g-rail EN 60715-G 32
- Hutschiene EN 60715-35x15  
mounting rail EN 60715-35x15



Weitere Daten siehe Katalog  
further data see catalog

Freitoleranz nach		CAD - Zeichnung, keine manuellen Änderungen			1. Verwendung: -		Bl.: 1 von 1		
	Maßstab	Werkstoff und Oberfläche:		2003	Tag	Name		Zeichnung Nr. <b>57.404.6955.1 01K</b>	Index
	<b>2:1</b>			Entworfen	15.05.	Schmitt J.			
				Geprüft	-	-		Ersatz für: -	
		Vol.	mm <sup>3</sup>	Dfl.	mm <sup>2</sup>	Normgepr.	-		
Buchstabe		Datum / Blatt		Änderung		Benennung		ETAGENKLEMME modular double-deck terminal	
<b>wieland</b> Elektrische Verbindungen				WK 4 E/U/VB					

Weitergabe sowie Vervielfältigung dieses Dokuments, Verwertung und Mitteilung seines Inhalts sind verboten, soweit nicht ausdrücklich gestattet.  
 The reproduction, distribution and utilization of this document as well as the communication of its contents to others without express authorization is prohibited.