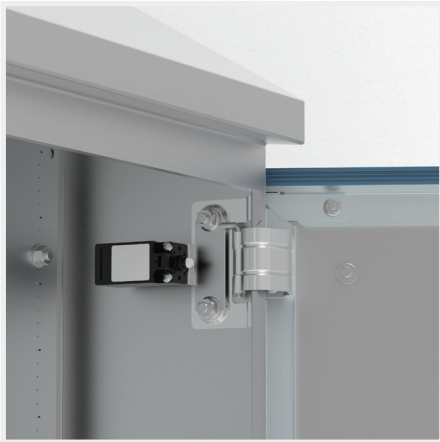


# HDSW

Door switch for HDW



**Description:** Door switch to activate any electrical device (lighting, signalling, alarms, etc.) designed for HDW range of wall mounted enclosures. No machining is required.

**Switch capacity:** 3 A / 240 V.

**Approvals:** CE, cULus listed.

**Pack quantity:** 1 piece with mounting instructions.

**Additional information:** Minimum enclosure depth 210 mm.

Item no.	Part.No
	HDSW01